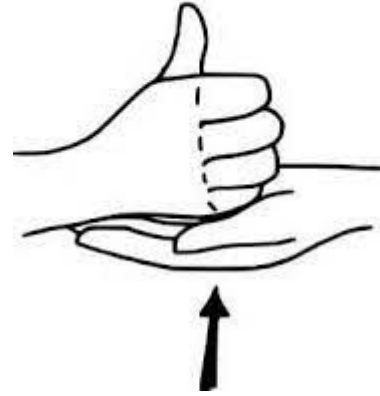


KSD



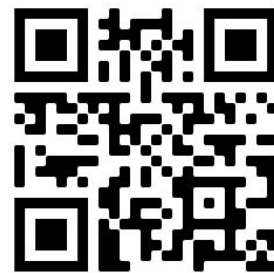
Needs your help

Kentucky School for the Deaf working toward accreditation. There are 12 different surveys to see what KSD is doing well and how we can improve.

YOU choose which surveys you want to share your thoughts. Survey directions are provided in ASL and English. Use the **link or QR** code below to open the surveys. We will be using this data to help drive our work at KSD.

Thank for your time and commitment to KSD!

<https://bit.ly/ksd2021>



Deadline to respond to surveys is September 30, 2021.